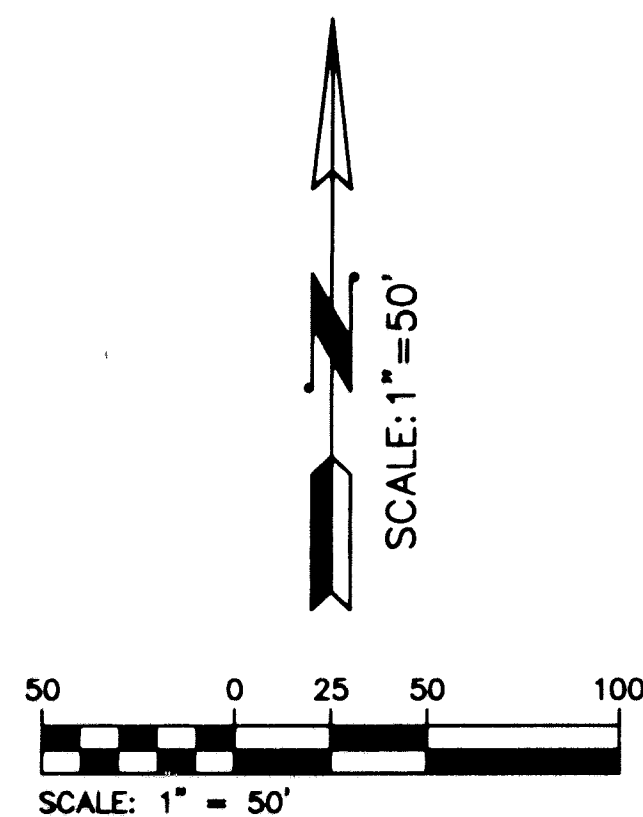


# CRYSTAL BAY

BEING A REPLAT OF TRACT A OF THE POLO CLUB EQUESTRIAN CENTER  
PART OF THE POLO CLUB P.U.D. AS RECORDED IN PLAT BOOK 61,  
PAGE 166 OF THE PUBLIC RECORDS OF PALM BEACH COUNTY, FLORIDA.  
IN PART OF SECTION 27, TOWNSHIP 46 SOUTH, RANGE 42 EAST  
PALM BEACH COUNTY, FLORIDA  
SHEET NO. 5 OF 5

GEE & JENSON  
ENGINEERS - ARCHITECTS - PLANNERS, INC.  
WEST PALM BEACH, FLORIDA  
MARCH 1997

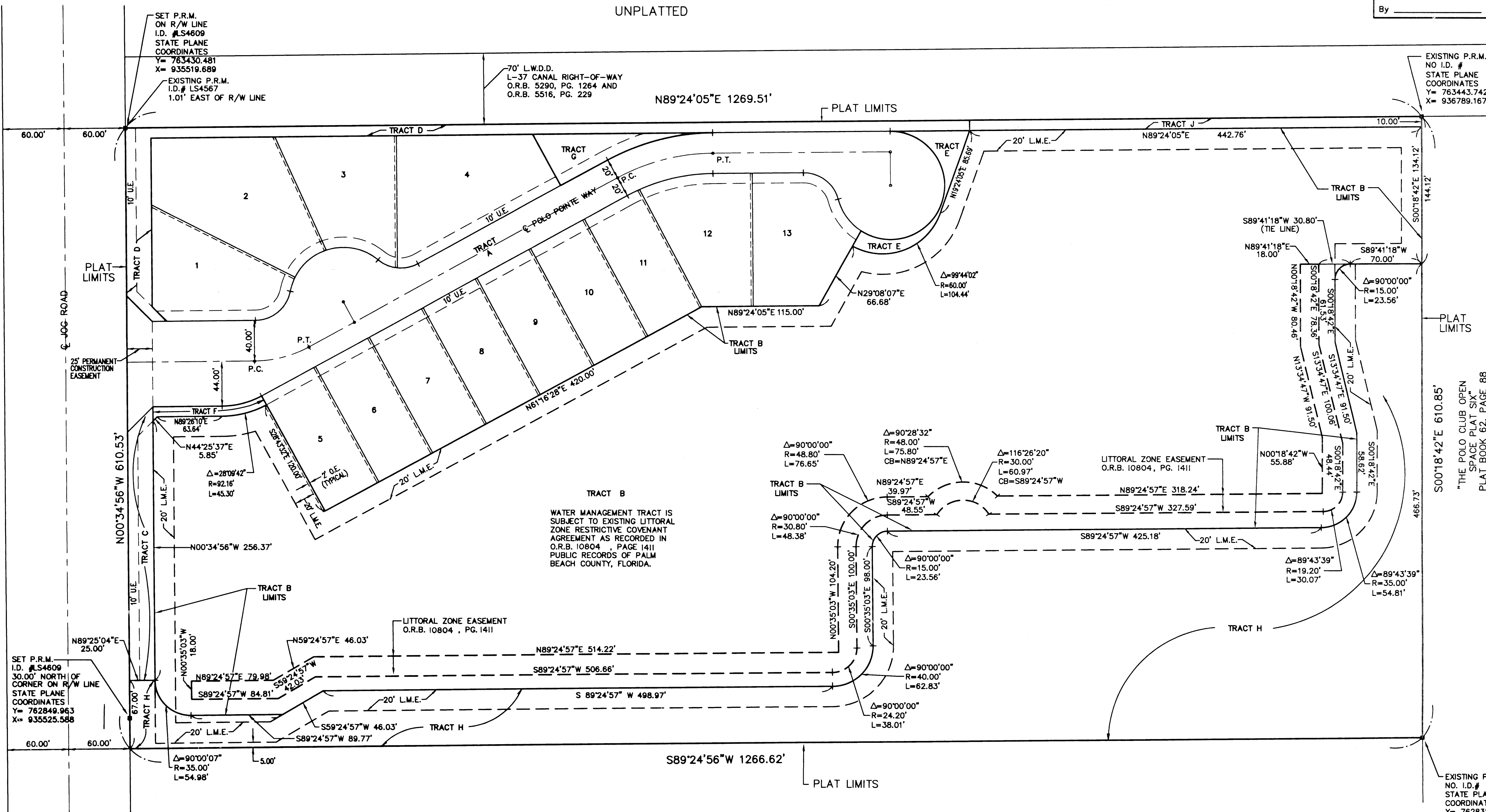
STATE OF FLORIDA  
COUNTY OF PALM BEACH  
This plat was filed for  
record at \_\_\_\_\_ M. this \_\_\_\_\_ day  
of \_\_\_\_\_ 1998, and duly  
recorded in Plat Book No. \_\_\_\_\_  
on Pages \_\_\_\_\_ thru \_\_\_\_\_  
DOROTHY H. WILKEN  
Clerk Circuit Court  
By \_\_\_\_\_ D. C.



UNPLATTED

UNPLATTED

UNPLATTED



TRACT B  
WATER MANAGEMENT TRACT IS  
SUBJECT TO EXISTING LITTORAL  
ZONE RESTRICTIVE COVENANT  
AGREEMENT AS RECORDED IN  
O.R.B. 10804 , PAGE 1411  
PUBLIC RECORDS OF PALM  
BEACH COUNTY, FLORIDA.

LITTORAL ZONE EASEMENT  
O.R.B. 10804 , PG. 1411

"THE POLO CLUB OPEN  
SPACE PLAT SIX"  
PLAT BOOK 62, PAGE 88

SET P.R.M.  
I.D. #LS4809  
30.00' NORTH  
CORNER ON R/W LINE  
STATE PLANE  
COORDINATES  
Y = 762849.963  
X = 935525.588

SET P.R.M.  
ON R/W LINE  
I.D. #LS4609  
STATE PLANE  
COORDINATES  
Y = 763430.481  
X = 935519.689  
EXISTING P.R.M.  
I.D. #LS4567  
1.01' EAST OF R/W LINE

70' L.W.D.D.  
L-37 CANAL RIGHT-OF-WAY  
O.R.B. 5290, PG. 1264 AND  
O.R.B. 5516, PG. 229

EXISTING P.R.M.  
NO. I.D. #  
STATE PLANE  
COORDINATES  
Y = 763443.742  
X = 936789.167

EXISTING P.R.M.  
NO. I.D. #  
STATE PLANE  
COORDINATES  
Y = 762832.883  
X = 936792.489

SUBDIVISION Crystal Bay  
BOOK 85  
PAGE 48  
FILED LINE B  
QUAD # 87  
SECTION 8  
TOWNSHIP 46S  
RANGE 42E  
ZIP CODE 33444  
PUD NAME Polo Club

COMPUTED M. HORAN  
DRAWN M. HORAN  
CHECKED  
APPROVED  
JOB NO. 95-238

THIS INSTRUMENT PREPARED BY:  
JAMES A. DAVIS, PSM  
FOR GEE & JENSON, ENGINEERS - ARCHITECTS - PLANNERS, INC.  
(FLORIDA CERTIFICATE OF AUTHORIZATION NUMBER LB2934)  
ONE HARVARD CIRCLE  
WEST PALM BEACH, FLORIDA 33409-1923

NOTE: ALL LOT LINES ARE NON-RADIAL UNLESS OTHERWISE NOTED.